

Schuman 6.  
6, Rond Point Schuman.  
Schumanplein 6, 1040 Brussels.



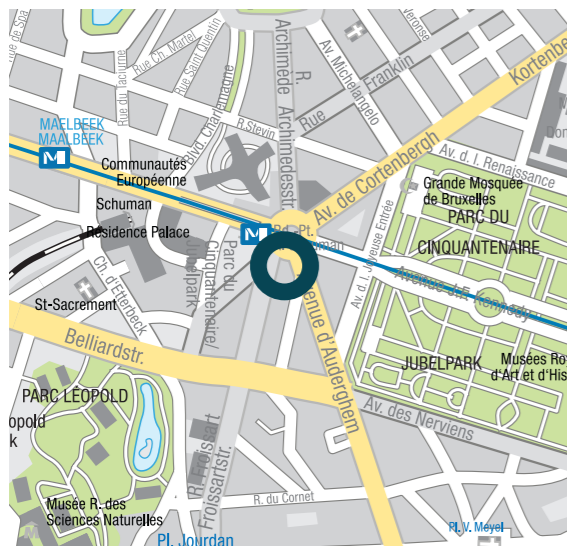
Facts.

- Year built: 1973/2012.
- 9 above-ground floors and 3 below-ground floors.
- Space can be divided for up to 3 units per floor.
- Adequate parking spaces available in underground garage.
- Elegant lobby.
- 4 passenger lifts.
- Built-in air conditioning.



Location.

- Prestigious location directly on the Schuman Roundabout.
- Key EU institutions in close proximity.
- Schuman metro station approx. 100 metres away.
- Direct connection to Brussels tunnel system.
- Zaventem Airport approx. 20 minutes away by car.
- Wide choice of restaurants, cafés and bistros.
- Shopping facilities in the vicinity.

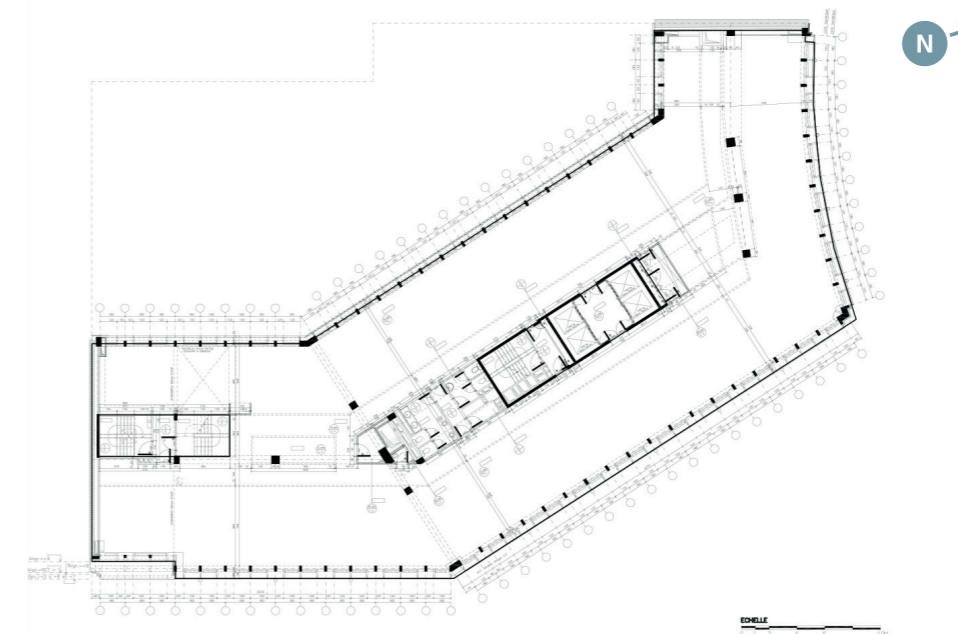


Schuman 6.  
6, Rond Point Schuman.  
Schumanplein 6, 1040 Brussels.

Rental Space.

Floor	Total
9th	1.002 sqm
8th	1.077 sqm
7th	1.194 sqm
6th	1.201 sqm
5th	1.201 sqm
4th	1.201 sqm
3rd	1.201 sqm
2nd	1.201 sqm
1st	1.138 sqm
<b>Total office space</b>	<b>10.416 sqm</b>
Parking (ratio 1:86)	121 spaces
Multi Use	408 sqm
Archives	161 sqm
Retail	508 sqm

standard floor



[www.deka-stars-belux.com](http://www.deka-stars-belux.com)  
[www.schuman6.com](http://www.schuman6.com)

This document is not contractual.

**Contact**  
Jack Schulte  
Phone: (+32) 2 627 13 52  
Email: [jack.schulte@deka.de](mailto:jack.schulte@deka.de)



**Deka Immobilien Investment GmbH**  
BeLux Regional Office/Belgium  
Avenue Louise 523  
1050 Brussels, Belgium  
[www.deka-immobilien.de](http://www.deka-immobilien.de)